

ΑΩ

# *Galatia SIL Greek Unicode Fonts*

## Installation Guide



SIL International

## Table of Contents

Table of Contents .....	2
Installation Guide: Galatia SIL Greek Unicode Fonts.....	3
Introduction .....	3
License.....	4
Overview of the Galatia SIL Fonts.....	5
Installation and Setup in Microsoft ® Windows ® .....	5
Windows 2000/XP Font Installation .....	5
Opening a File - Windows 2000.....	6
Opening a File - Windows XP.....	7
Uninstalling a Font .....	9
Technical Reference .....	9
Conversion.....	9
Technical Support.....	9

# Installation Guide: Galatia SIL Greek Unicode Fonts

## Introduction

The associated files with this package constitute the Galatia SIL Greek Unicode Fonts. SIL International (SIL) is an organization of linguists dedicated to the study and promotion of the thousands of languages around the world. We are happy to make these Unicode fonts available to the general public at no charge. You may (and are encouraged to) share these fonts with your friends and co-workers, but with the following restrictions:

1. All files must be copied together, including this one.
2. No fee may be charged for the fonts.
3. They may not be used as a basis for other fonts.

Even though these fonts are “free,” SIL retains all copyright and ownership of the included fonts and reserves the right to restrict their use and distribution at any time. They may be placed on websites, etc. but cannot be included in (or bundled with) any commercial product including hard disks or CD-ROMs without specific written permission.

The Galatia SIL fonts contain all the symbols defined in Unicode 3.1 for Latin-1, Greek, Macintosh Character Set (US Roman), and 850WE/Latin-1 and are supplied in Regular and Bold typefaces.

## License

This is a legal agreement between you and SIL International (SIL) covering your use of the Galatia SIL Greek Unicode Fonts. Be sure to read the following agreement before using the software. IF YOU DO NOT AGREE TO THE TERMS OF THIS AGREEMENT, DO NOT USE THE SOFTWARE AND DESTROY ALL COPIES OF IT.

This copyright software is distributed as freeware. You may use this software without any charge and may distribute to others. The software is owned by SIL and is protected by United States copyright laws and international treaty provisions. Therefore, you must treat the software like any other copyrighted material (e.g. a book or musical recording).

Commercial distribution of the software is restricted without permission of SIL. If you wish to distribute this software contact SIL for details on obtaining a license.

You may not rent or lease the software, nor may you modify, adapt, translate, reverse engineer, decompile, or disassemble the software.

If you violate any part of this agreement, your right to use this software terminates automatically and you then must destroy all copies of this software in your possession.

THE SOFTWARE AND RELATED DOCUMENTATION ARE PROVIDED "AS IS" AND WITHOUT WARRANTY OF ANY KIND AND SIL EXPRESSLY DISCLAIMS ALL OTHER WARRANTIES, EXPRESS OR IMPLIED, INCLUDING, BUT NOT LIMITED TO, THE IMPLIED WARRANTIES OF MERCHANTABILITY AND FITNESS FOR A PARTICULAR PURPOSE. UNDER NO CIRCUMSTANCES SHALL SIL BE LIABLE FOR ANY INCIDENTAL, SPECIAL OR CONSEQUENTIAL DAMAGES THAT RESULT FROM THE USE OR INABILITY TO USE THE SOFTWARE OR RELATED DOCUMENTATION, EVEN IF SIL HAS BEEN ADVISED OF THE POSSIBILITY OF SUCH DAMAGES.

This Agreement shall be governed by the laws of the State of Texas. If for any reason a court of competent jurisdiction finds any provision of this Agreement, or portion thereof, to be unenforceable, that provision of the Agreement shall be enforced to the maximum extent permissible so as to effect the intent of the parties, and the remainder of this Agreement shall continue in full force and effect.

The software and documentation is provided with RESTRICTED RIGHTS.

Use, duplication, or disclosure by the Government is subject to restrictions as set forth in subdivision (b)(3)(ii) of The Rights in Technical Data and Computer Software clause at 252.227-7013.

Manufacturer is SIL International, 7500 West Camp Wisdom Rd., Dallas, Texas, 75236, United States of America.

## Overview of the Galatia SIL Fonts

The Galatia SIL fonts are the identical typeface to the SIL Galatia font released by SIL in 1997.

The Galatia SIL fonts differ significantly from the SIL Galatia in the following ways:

1. They are Unicode fonts. The encoding is *entirely* different from the old fonts. Data typed with the old fonts will have to be re-typed or converted before it will display with the Galatia SIL fonts. The Galatia SIL fonts will only work in applications which support Unicode.
2. The name was changed to "Galatia SIL" to reflect the new SIL font naming conventions.
3. The Latin-1 codepage ("A-Z", "a-z" plus some punctuation, etc.) is included in the font. This is to assist with viewing Latin or Roman text. The Macintosh character set for US Roman and the 850 WE/Latin-1 encodings are also included.
4. You will need to use a keyboard program, but you may use any Greek Unicode keyboard you prefer.

5. The following were added:

03D7 GREEK KAI SYMBOL  
03F3 GREEK LETTER YOT  
03F4 GREEK CAPITAL THETA SYMBOL  
Combining Diacritics  
Latin-1 (MS Windows CP 1252)

9. The following were revised:

03DD GREEK SMALL LETTER DIGAMMA  
Shape changed to more standard form  
f-like shape retained as potential presentation form  
0384 GREEK TONOS  
Redesigned to add slight tilt toward right  
Old shapes not retained  
(note: this affects all monotonic composites)  
period, colon, semicolon, greek question mark all enlarged

10. Autohinting was done by Fontlab, but manually tweaked to fix problems (esp. in the regular weight).

11. No transliteration fonts have been developed at this time.

## Installation and Setup in Microsoft ® Windows ®

Follow the instructions below, according to your operating system.

### Windows 2000/XP Font Installation

The Galatia SIL fonts can be installed just like any other TrueType font. You may use any font installer programs you have, or the Control Panel application supplied with Windows.

Font installation using the Control Panel is summarized below.

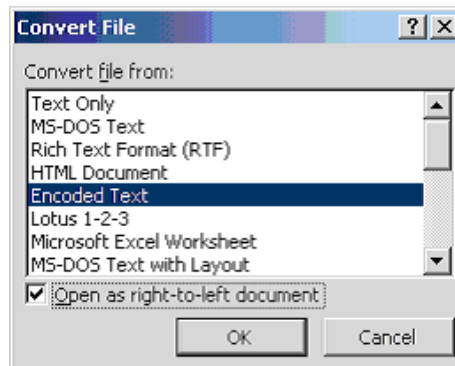
1. Double-click the *GalSILv2b.zip* file and extract all files to a folder of your choice.

2. Click **Start / Settings / Control Panel**.
3. Double-click on the **Fonts** icon to bring up the **Fonts** dialog.
4. Find and delete any old version(s) of the font *Galatia SIL* or *Galatia SIL Bold*. You do not have to delete any *SIL Galatia* font.
5. Click on the **File / Install New Font...** button to bring up the **Add Fonts** dialog.
6. Open the Drives list and select the folder containing the Galatia SIL files just unzipped. Go to the **Fonts** folder. In a few seconds the name of the fonts (*Galatia SIL (TrueType)* and *Galatia SIL Bold (TrueType)*) will appear in the List of Fonts.
7. Click the font names to select, and then **OK**. In a few seconds, the fonts will be listed in the **Installed Fonts** list.
8. Click on **File / Close** or exit the window.

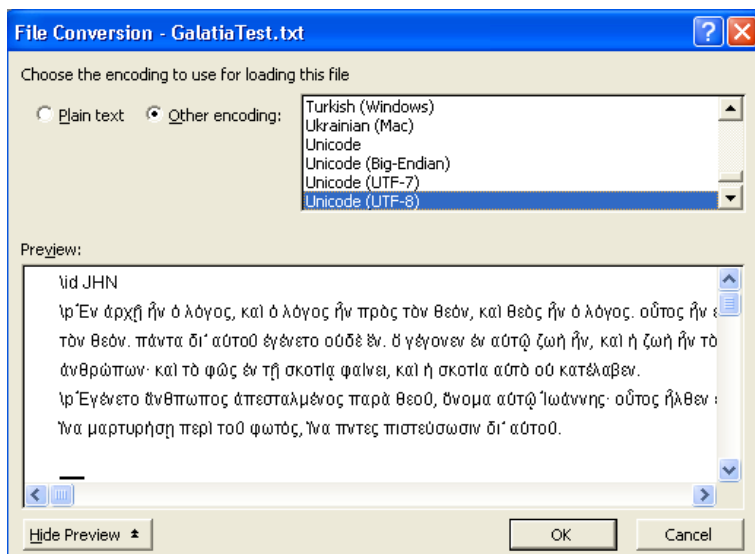
Note that certain applications may not see the new font immediately. You may have to quit and restart the application for the font to become available.

## Opening a File - Windows 2000

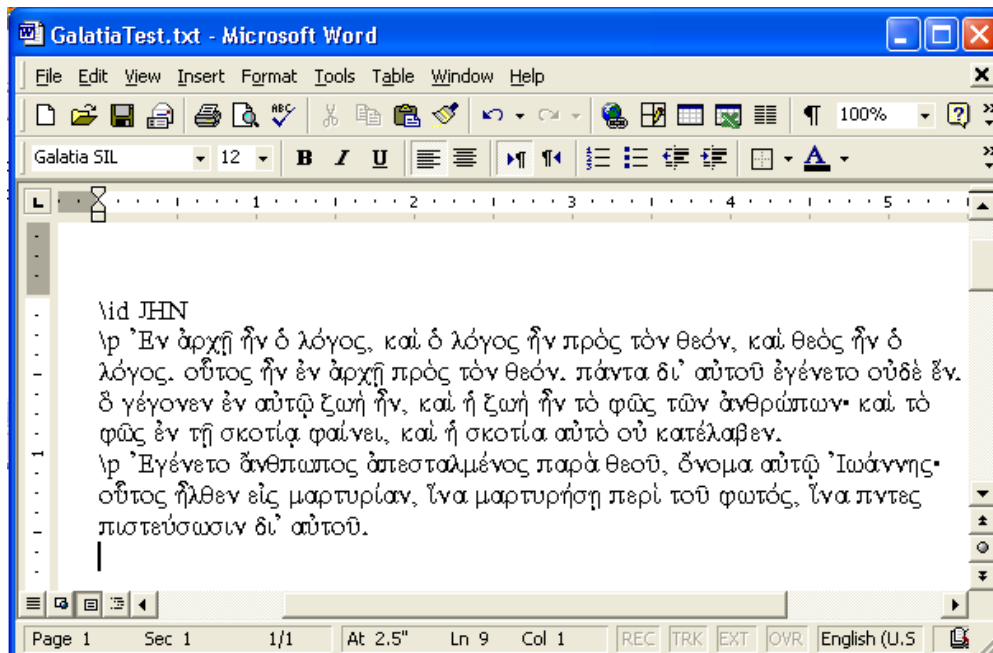
1. Open *GalatiaTest.txt* in Word. It is found in the **Documentation** folder. At the first box, make sure “Encoded Text” is highlighted. Click **OK**.



2. **Other encoding** should be selected and make sure “Unicode (UTF-8)” is highlighted. Click **OK**.



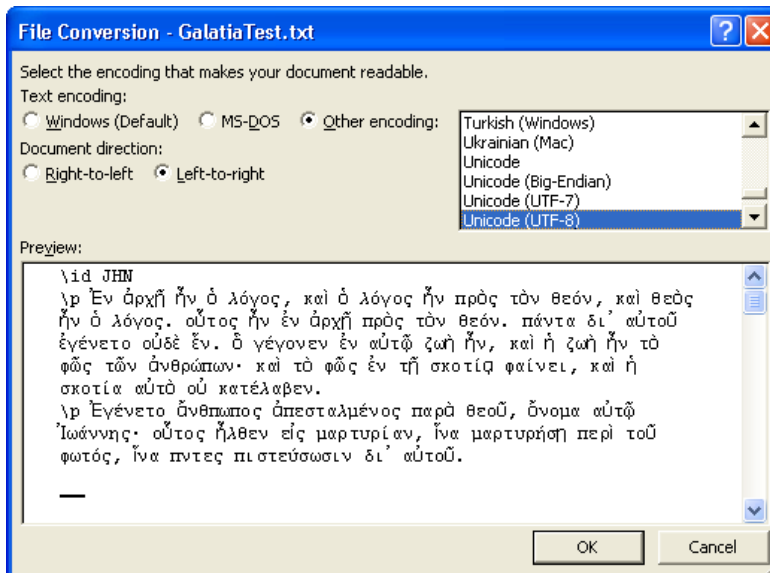
3. Select All and change the font to **Galatia SIL** and choose a point size.
4. With All selected, double-click the box that says what language this is and if necessary, change to **Greek**. It's at the bottom center of the screen on the same line as **Page** and **Sec**. It may say **Saudi Arabia**. Desired Results:



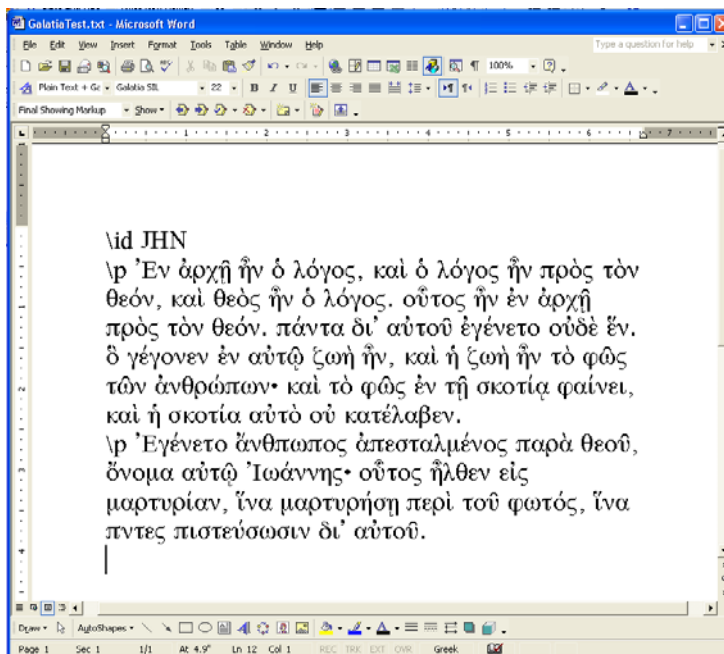
If the cursor is in an English section, it will say **English**. Click on a Greek line to check if it accepted **Greek**.

## Opening a File - Windows XP

1. Open *GalatiaTest.txt* in Word 2002. It is found in the **Documentation** folder. Make sure “Other encoding” and “Unicode (UTF-8)” is highlighted. Click **OK**.



2. Select All and change the font to **Galatia SIL** and choose a point size.
3. With All selected, double-click the box that says what language this is and if necessary, change to **Greek**. It's at the bottom center of the screen on the same line as Page and Sec. It may say **Saudi Arabia**. Desired Results:



If the cursor is in an English section, it will say **English**. Click on a Greek line to check if it accepted **Greek**.



## Uninstalling a Font

Fonts can be deleted and re-installed without interfering with either keyboards or the input locale. You may use any font uninstall utility, or follow these directions:

1. Click **Start / Settings / Control Panel**. Double-click **Fonts**.
2. Scroll down to “Galatia SIL” and/or “Galatia SIL Bold” and click once to highlight.
3. Click **File / Delete**. Click **Yes** to delete.
4. Close the Fonts window.

## Technical Reference

### Conversion

Two draft conversion programs have been included with this package. One is for Consistent Changes© (available from <http://www.sil.org/computing>) and the other is for TECKit© (available from <http://www.sil.org/nrsi/teckit>). Neither of the Greek mappings have been extensively tested. We will make Greek conversion programs available via the SIL website, as they are developed. See [www.sil.org/computing](http://www.sil.org/computing).

## Technical Support

If you have problems using the Galatia SIL Greek Unicode Fonts, please contact:

User Support  
SIL International  
Non-Roman Script Initiative  
7500 W. Camp Wisdom Rd.  
Dallas, TX 75236  
USA

E-mail: [sil\\_fonts@sil.org](mailto:sil_fonts@sil.org)