

Pathway: Configuration Tool & Print Via dialog box Student Manual



Copyright © 2014 SIL International

Contents

| | |
|---|-----------|
| Contents | 2 |
| Introduction | 3 |
| Pathway Configuration Tool | 3 |
| Export Through Pathway dialog box | 3 |
| Anatomy of the Pathway Configuration Tool | 4 |
| Navigation Pane - Destination options | 4 |
| Stylesheets Pane | 5 |
| “Details” Pane | 5 |
| How to use this manual | 5 |
| Module A: Using the Pathway Configuration Tool | 6 |
| Add a new stylesheet | 7 |
| Copy a stylesheet | 7 |
| Delete a stylesheet (custom stylesheets only) | 7 |
| Preview a layout | 7 |
| Set Defaults | 8 |
| Reset | 8 |
| Send stylesheets to someone | 8 |
| Specify metadata in the Info tab | 10 |
| Specify stylesheet properties (<i>Custom</i> stylesheets only) in the Properties tab | 10 |
| Examples | 10 |
| Module B: Using Pathway in SIL FieldWorks | 11 |
| Use the Export Through Pathway dialog box | 12 |
| Module HR: Using Help and Other Resources | 14 |
| Pathway Help | 14 |
| Accessing online help | 14 |
| Index | 15 |

Introduction

The goal of the Pathway program is to help enable the production of publishable language data from content-providing programs, such as SIL FieldWorks.

- The *input* is SIL FieldWorks Language Explorer (FLEX), and is referred to as the *content-providing* program.
- The *output* can be to paper, mobile devices, web (Internet), and e-book readers. Paper output includes LibreOffice, InDesign, PDF and other. <http://pathway.sil.org/> has a list of output options.

Pathway Configuration Tool

This is a *stand-alone* tool designed to help those with appropriate knowledge work with stylesheets. In this tool, you see lists of stylesheets that can be used in the **Export Through Pathway** dialog box. You use the dialog box in the content-providing programs). *Standard* stylesheets are installed with the program. *Custom* stylesheets are those you added or copied.

You use the Pathway Configuration Tool to

- make sure the applicable stylesheets are available to the **Export Through Pathway** dialog box
- specify properties for custom stylesheets
- set *default* selections for the **Export Through Pathway** dialog box.

Export Through Pathway dialog box

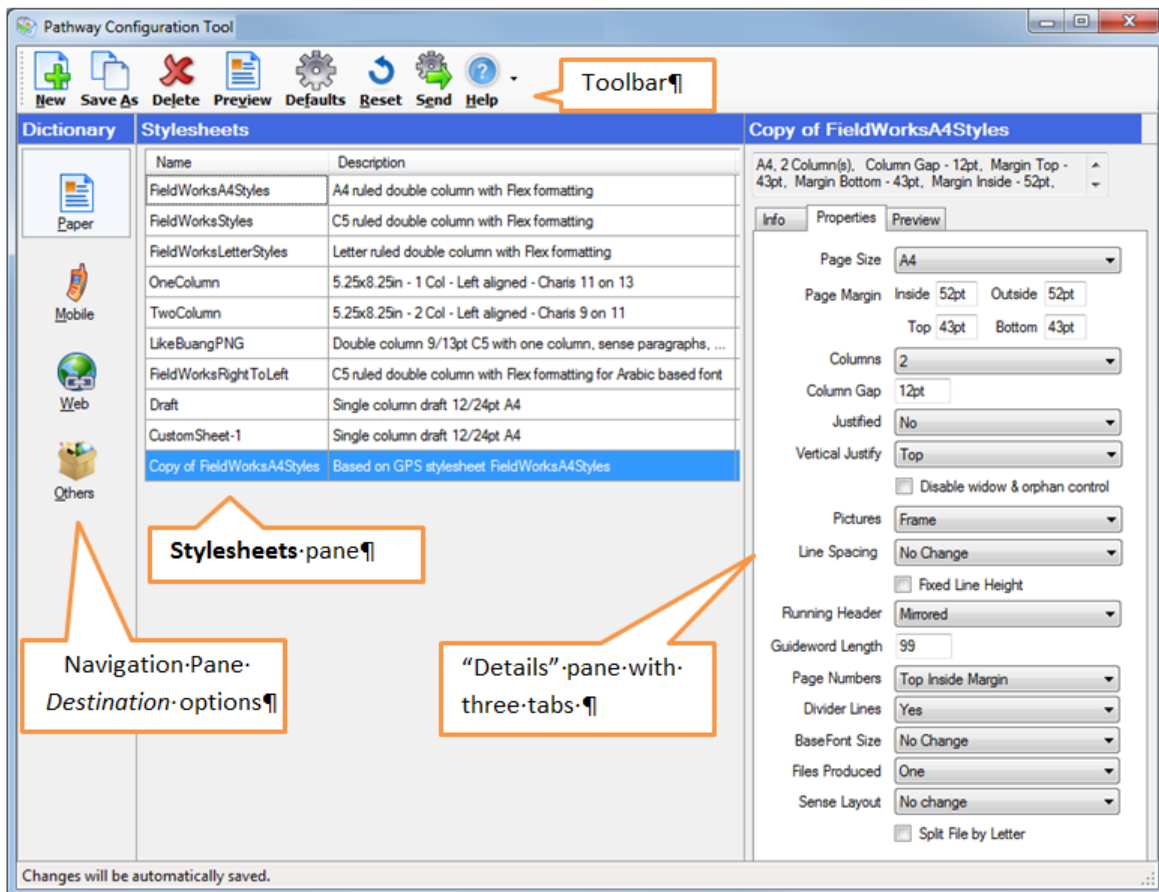
The **Export Through Pathway** dialog box enables the use of stylesheets to format the data you export from *content-providing* programs, such as SIL FieldWorks. The stylesheets do *not* change the formatting or layout of language data as it appears in SIL FieldWorks, but only that of the exported output data.

You need to use the features in SIL FieldWorks to make sure the data is correct, sorted, filtered, and ready for export. Then, depending on the stylesheet selected during export, various style and formatting elements are applied to the output, such as number of columns, column gap, divider lines, paper size and margins. Some stylesheets pass most of the styles used in the *content-providing* program to the output file.

Anatomy of the Pathway Configuration Tool

The Pathway Configuration Tool does not have a menu bar. Below the Title bar is the toolbar:

Below the toolbar, you see three panes:



Navigation Pane - Destination options

- **Paper:** You can use standard or custom stylesheets to export language data to OpenOffice/LibreOffice, PDF, InDesign, and others.
- **Mobile:** Currently only *DictionaryforMIDs* is available.
- **Web:** For output that is intended to be displayed on an Internet web site.
- **Others:** Output *EBook (epub)* is the current option here. **Others** is a place to store and access specialty or custom stylesheets that do not fit nicely within **Paper**, **Mobile** or **Web**.

It is intended that each of the destination options have one or more *standard* stylesheets. *Standard* stylesheets are provided with Pathway, and you cannot edit them.

Custom stylesheets are copies you make of the standard stylesheets, or stylesheets you add. These are editable. The stylesheets for each destination option appears in the center **Stylesheets** pane.

Stylesheets Pane

The center pane lists all the standard and custom stylesheets that are applicable to the current selection in the Navigation Pane.

“Details” Pane

This pane has three tabs:

- **Info**
The **Info** tab stores metadata such as the stylesheet name and description.
- **Properties**
The **Properties** stores properties you can edit for *custom* stylesheets only.
- **Preview**
A preview of sample data is displayed using the stylesheet that is currently selected in the **Stylesheets** pane.

How to use this manual

This manual will help you get started using the basic features of Pathway. The Pathway Configuration Tool Help has more detailed information.

The Help topics also list various Internet sites where you can find on-line discussions, or email addresses for more technical assistance.

Module A: Using the Pathway Configuration Tool

After you install and start the Pathway Configuration Tool, you will first use the features in the [Navigation Pane](#) to select destination (**Paper**, **Mobile**, **Web** or **Others**).

Refer to [Using Pathway in SIL FieldWorks](#) for help using Pathway in that content-providing application.

Here are things you can do to use this tool, presented in the order of the toolbar buttons:

- [Add a new custom stylesheet](#)
- [Copy a standard stylesheet](#)
- [Delete a custom stylesheet](#)
- [Preview a layout](#)
- [Set Defaults](#)
- [Reset](#)
- [Send a stylesheet to someone](#)


Here are other things you do to use this tool, presented by the features in the “Details” pane (the right pane):

- [Specify metadata in the Info tab](#)
- [Specify stylesheet properties in the Properties tab](#)
- Click the **Preview** tab to see a preview that uses the selected stylesheet.

Add a new stylesheet

1. In the Navigation Pane, select the destination (**Paper**, **Mobile**, **Web**, or **Others**).

The stylesheet you add will appear in the list shown in the **Stylesheets** pane.

2. On the toolbar, click **New** .


A new *custom* stylesheet is added to the displayed list, and is ready for your edits in the [Info tab](#) and [Properties tab](#).

Copy a stylesheet

1. In the Navigation Pane, select the destination (**Paper**, **Mobile**, **Web**, or **Others**).

The stylesheet you will copy needs to appear in the list shown in the **Stylesheets** pane.

2. In the **Stylesheets** pane, click the stylesheet you want to copy.

3. On the toolbar, click **Save As** .


A copied (*custom*) stylesheet is added to the displayed list, and is ready for your edits in the [Info tab](#) and [Properties tab](#).

Delete a stylesheet (custom stylesheets only)

1. In the Navigation Pane, select the destination (**Paper**, **Mobile**, **Web**, or **Others**).


The stylesheet you will delete needs to appear in the list shown in the **Stylesheets** pane.

2. In the **Stylesheets** pane, click the *custom* stylesheet you want to delete.

3. On the toolbar, click **Delete** .

The selected stylesheet is deleted.

Preview a layout

On the toolbar, the **Preview** button  uses sample data with the stylesheet currently selected in the **Stylesheets** pane.

1. In the Navigation Pane, select the destination (**Paper**, **Mobile**, **Web**, or **Others**).

The stylesheet you will preview needs to appear in the list shown in the **Stylesheets** pane.

2. In the **Stylesheets** pane, click the stylesheet.

3. On the toolbar, click **Preview**.


Another window opens with sample data that uses the selected stylesheet. For a *custom* stylesheet, you need to have Open Office installed because sample data opens in Open Office to show an actual preview.

Tip: The **Export Through Pathway** dialog box and the **Set Defaults** dialog box (in Pathway Configuration Tool) also have a **Preview** feature. There is also a **Preview** tab in the "Details" pane.

Set Defaults


The **Export Through Pathway** dialog box opens when you export your data from a content-providing application. You use the **Set Defaults** dialog box to specify the selections that appear as the *default selections* when the **Export Through Pathway** dialog box opens.

1. In the Navigation Pane, select the destination (**Paper, Mobile, Web, or Others**).

2. On the toolbar, click **Defaults** .

The **Set Defaults** dialog box opens.


3. In the **Set Defaults** dialog box, make the initial selections that you want set when the **Export Through Pathway** dialog box opens.

- Select the destination.
- Select the stylesheet. If the stylesheet you want is not listed, you need to make it available in the **Info** tab. In this case, click **Cancel** to close the dialog box, and then in the Info tab, select the **Available** check box for that stylesheet.
- To see a preview of the available stylesheets, click the preview button () to open the **Select Layout** dialog box.
- Click each of these tabs, and edit the information as needed: **Publication Info**, **Front Matter** (EBook *only*), and **Processing Options**.

4. Click **OK** to close the **Set Defaults** dialog box.

Reset


Be aware that you cannot undo this.

Reset  returns all user-controlled setting back to the initial values, as it was the first time Pathway was installed on your computer. This includes removing all stylesheets you have added.

Send stylesheets to someone

You can put a set of stylesheets in a zip file and email it. You could do this to keep a recipient's set of stylesheets the same as yours. When you do the steps below, all the stylesheets in the displayed list are put in the zip file.

1. In the Navigation Pane, select the destination (**Paper, Mobile, Web, or Others**).

2. On the toolbar, click **Send** .

Your default email program opens with the stylesheet already attached.

3. Enter the email address to the recipient(s), complete the email message, and then send it.

Specify metadata in the Info tab

You cannot edit the name, description and other metadata for *standard* stylesheets (ones that came with the installation of Pathway). For *custom* stylesheets (those you add or copy), you can. The **Approved By** box is not used for custom stylesheets.

1. In the Navigation Pane, select the destination (**Paper, Mobile, Web, or Others**).
2. In the **Stylesheets** pane, click the stylesheet you will change.
3. In the “Details” pane, (the right pane), click the **Info** tab.
4. Type or edit the content any of the boxes that are available.
 - Only stylesheets with a selected **Available** check box are available for selection in the [Set Defaults](#) dialog box and **Export Through Pathway** dialog box.

Specify stylesheet properties (*Custom* stylesheets only) in the Properties tab

You cannot edit the properties for *standard* stylesheets (ones that came with the installation of Pathway). For *custom* stylesheets (those you add or copy), you can.

1. In the Navigation Pane, select the destination (**Paper, Mobile, Web, or Others**).
2. In the **Stylesheets** pane, click the stylesheet you will change.
3. In the “Details” pane, (the right pane), click the **Properties** tab.
4. For boxes with a down arrow, select the property you want.
5. For the **Page Margin** boxes or **Column Gap** box, type the relative or absolute values you want to use (**Paper** only).

Here are the relative units you can use:

- **em**: the 'font-size' of the relevant font
- **ex**: the 'x-height' of the relevant font
- **px**: pixels, relative to the viewing device

Examples

- You could type a relative values such as **1.5em** to indicate that you want to specify a size of 1.5 times the width of an em-dash character. It changes to **150%** when you reopen the stylesheet, and indicates the percentage of the size of an em-dash character. You can type a percentage value directly. These change according to the current font size.
- You could type an absolute value, such as **0.5in** or **2cm**. Absolute values are converted to the nearest point value and also rounded to exclude any fractions of a point. You see this change when you reopen the stylesheet.

A red exclamation point (❗) appears if you type any value that is not possible or outside of preset boundaries.

Module B: Using Pathway in SIL FieldWorks

Pathway consists of two parts: the **Pathway Configuration Tool**, and the **Export Through Pathway** dialog box which opens in SIL FieldWorks.

You open the **Export Through Pathway** dialog box with menu commands in SIL FieldWorks. You also can use the **Select Layout** dialog box. You may recall that we [set default selections](#) for this dialog box in a previous module.

Here are thing you do with Pathway in FieldWorks:

[Use the Export Through Pathway dialog box in SIL FieldWorks Language Explorer \(FLEX\)](#)

Use the Export Through Pathway dialog box

The styles you use in SIL FieldWorks Language Explorer (FLEX) *may* or *may not* be used in the output file; it depends on which Pathway stylesheet you will use.

Before you use Pathway, prepare the data in FLEX. Refer to the FLEX Help system for assistance with any of the tasks that you need to do to prepare the data. Examples:

- Sort and filter the data.
- Configure the dictionary.
- Make sure picture captions are correct.
- Make sure examples and example references are current and correct.
- Configure the reversal index.
- Generate a fresh grammar sketch.
- Check spellings of words in both vernacular and analysis writing systems.
- Apply styles, as desired, to individual writing system, embedded words, and so on.
Make sure the appropriate styles are set in FLEX.
- While these stylesheets enable a nearly WYSIWYG output, some style adjustments might be needed in the output file. For example, you may need to move pictures.

When the data in FLEX are ready for export, do the following steps:

1. On the **File** menu, click **Export**.

The **Export** dialog box opens.


2. In the dialog box, select the export option called **Dictionary, Reversal Index / Pathway (various outputs)**, and then click **Export**.

The **Select Your Organization** dialog box opens if you have not yet selected your organization. Otherwise, the **Export Through Pathway** dialog box opens.

3. If the **Select Your Organization** dialog box appears, select your organization, if it is in the list. Otherwise, click **Other** and then type the name of your organization in the **Organization Name** dialog box. Click **OK** in each open dialog box.

Your selection sets some default metadata in the **Export Through Pathway** dialog box.

4. In the **Export Through Pathway** dialog box, do one of the following:
 - If the [default selections](#) are what you want to use, do the following:
Click the **Intellectual Property Info** link. Read the information, and then select the check box for **I have complied with my organization's intellectual Property (copyright) and Archiving policies**. Click **OK**.
 - Change one or more selections. Click and review the **Publication Info** tab, **Front Matter** tab, and **Processing Options** tab. As needed, click the **Help** button for more

information. Also, if necessary, click the preview button () which is next to the **Select layout** box. In the **Select Layout** dialog box, click stylesheets and examine the preview to make sure you select the desired stylesheet.

Click the **Intellectual Property Info** link. Read the information, and then select () the check box for **I have complied with my organization's intellectual Property (copyright) and Archiving policies**. Click **OK**.

The export process begins and a progress indicator appears to indicate the progress. Then, the appropriate program (if installed) opens to display the exported data.

5. If you exported the dictionary data to Open Office, one or more dialog box will appear:
 - Click **Enable Macros** or **Disable Macros**. Refer to the Pathway Configuration Tool Help file for information about Open Office.
 - If you see a **Guide Word Reminder** dialog box, click **Yes** to update the header content or **No** to not update the header content.

Module HR: Using Help and Other Resources

This manual is intended to help you get started using the Pathway Configuration tool and **Export Through Pathway** dialog box. More complete discussions about concepts, terms and roles are presented in the Pathway Configuration Tool Help file and on the Internet.

Pathway Help

To open the Help file, do either of the following with the Pathway Configuration Tool open:

- Press **F1**.
- When a dialog box with a **Help** button is displayed, click the **Help** button.

If you need assistance navigating in the Help file, click the **Index** tab, and then type **Using Help**. Then, in the **Index** tab, double-click **Using Help overview**.

The **Glossary of Terms** gives definitions of some terms. However, topics in the **Concepts** book give a much more complete explanation of the terms, concepts and roles you need to know.

Links to other Help topics appear in most topics.

Accessing online help

- Some of the Help topics have hyperlinks to web pages.
- Some of the Help topics have email addresses you can use to request technical support.

Index

| | | | |
|--|--------------|--|----|
| About Pathway Configuration Tool..... | 3 | pane - Destination Options..... | 4 |
| Add stylesheet..... | 7 | Pathway Configuration Tool, use..... | 6 |
| Available stylesheet | 10 | Pathway Help | 15 |
| Copy stylesheet | 7 | Preview..... | 8 |
| Default, set | 8 | Properties of stylesheet | 10 |
| Delete stylesheet | 7 | Reset..... | 9 |
| Details Pane | 5 | Specify metadata for stylesheet (Info tab) | 10 |
| Dialog box | | Specify stylesheet properties (Display | |
| Export Through Pathway | 3, 8, 10, 12 | Properties tab) | 10 |
| Select Layout | 3, 8, 12 | Stylesheet | |
| Set Default | 8, 10 | Copy | 7 |
| Display properties, custom stylesheets | 10 | Delete | 7 |
| Export Through Pathway dialog box | 13 | Edit..... | 10 |
| FieldWorks | | New (Add)..... | 7 |
| Export Through Pathway | 12 | Send stylesheets to someone | 9 |
| Help | | Stylesheets Pane | 5 |
| Help File..... | 15 | Using | |
| Other Resources | 15 | Export Through Pathway in FieldWorks | |
| Introduction..... | 3 | | 12 |
| Introduction to Pathway | 3 | Pathway Configuration Tool..... | 6 |
| Navigation Pane - Destination options | 4 | | |