

Running Phonology Assistant on a Mac using Parallels

Several people have made attempts to run Phonology Assistant (PA) in a Parallels virtual machine installed on a Apple Mac computer. Of those people, some have succeeded and some have not. Below you will find sample output from PA 3.0.1 when it fails and a description of the solution following that.

Note: If you are using a later version of PA, you may not receive the same error message, but you may want to implement the same solution. If that fails, please send an e-mail to PaFeedback@sil.org and include a sample of the error message you receive.

Problem

The error people consistently receive when running PA 3.0.1 under Parallels is the following:

Outer Exception: **The type initializer for 'SIL.SpeechTools.Utils.FontHelper' threw an exception.**

```
at SIL.SpeechTools.Utils.FontHelper.MakeFont(Font fnt, Single size)
at SIL.Pa.Controls.ViewTabGroup..ctor() in c:\Phonology Assistant\src\PaControls\ViewTabGroup.cs:line 56
at SIL.Pa.PaMainWnd.InitializeComponent() in c:\Phonology Assistant\src\PADII\PaMainWnd.Designer.cs:line 75
at SIL.Pa.PaMainWnd..ctor(String[] commandLineArgs, Boolean showSplashScreen) in c:\Phonology Assistant\src\PADII\PaMainWnd.cs:line 56
at SIL.Pa.PA.Main(String[] commandLineArgs) in c:\Phonology Assistant\src\PaExe\Pa.cs:line 44
```

Inner Exception: **Invalid URI: The hostname could not be parsed.**

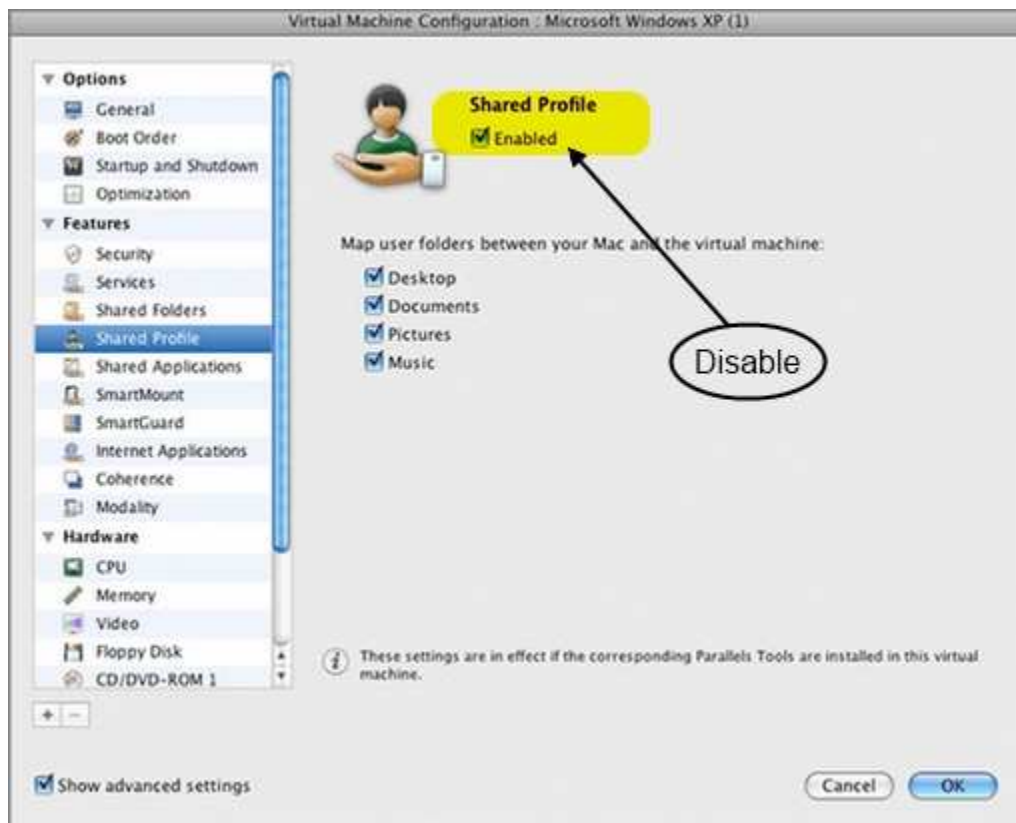
```
at System.Uri.CreateThis(String uri, Boolean dontEscape, UriKind uriKind)
at System.Uri..ctor(String uriString, UriKind uriKind)
at System.Xml.XmlResolver.ResolveUri(Uri baseUri, String relativeUri)
at System.Xml.XmlUrlResolver.ResolveUri(Uri baseUri, String relativeUri)
at System.Xml.XmlTextReaderImpl..ctor(String url, XmlNameTable nt)
at System.Xml.XmlTextReader..ctor(String url, XmlNameTable nt)
at System.Xml.XmlDocument.Load(String filename)
at SIL.SpeechTools.Utils.SettingsHandler.CreateNewSettingsFile() in c:\Phonology Assistant\src\SpeechToolsUtils\SettingsHandler.cs:line 69
at SIL.SpeechTools.Utils.SpeechToolsSettingsHandler..ctor() in c:\Phonology Assistant\src\SpeechToolsUtils\SpeechToolsSettingsHandler.cs:line 27
at SIL.SpeechTools.Utils.FontHelper.ResetFonts() in c:\Phonology Assistant\src\SpeechToolsUtils\FontHelper.cs:line 138
at SIL.SpeechTools.Utils.FontHelper..ctor() in c:\Phonology Assistant\src\SpeechToolsUtils\FontHelper.cs:line 108
```

Solution

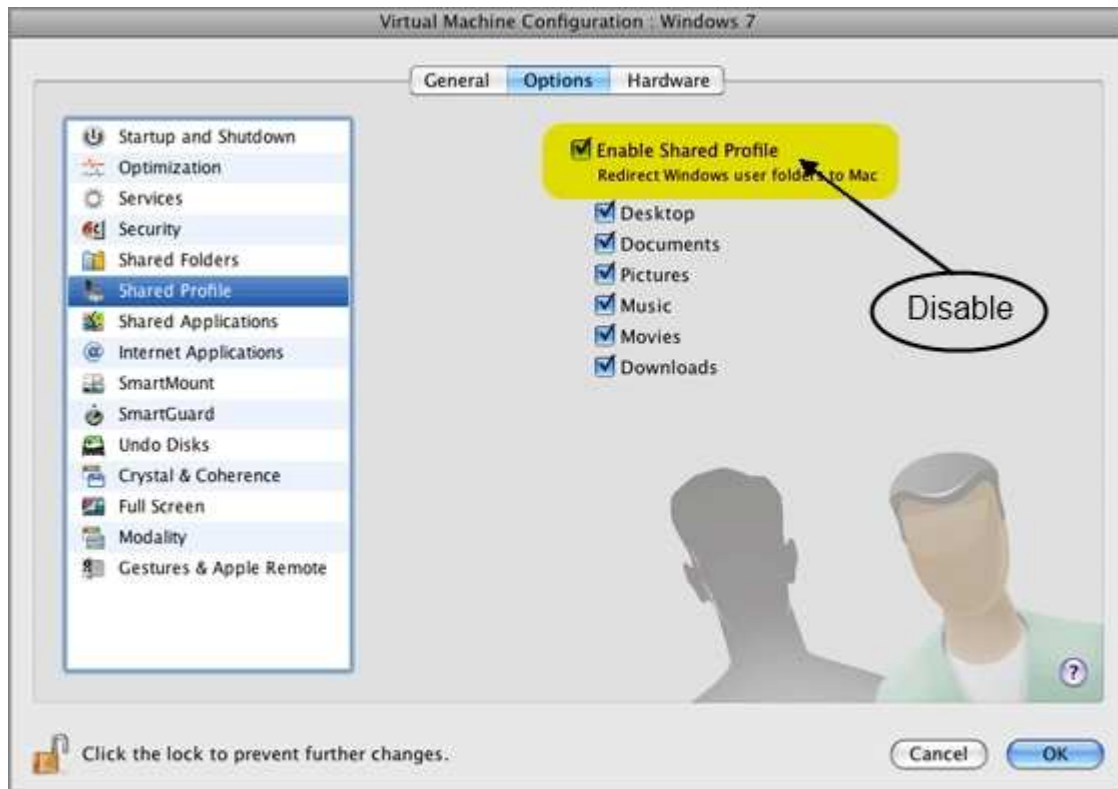
The solution, in a nutshell, is that the Parallels' configuration needs to be changed so '**Shared Profiles**' is disabled. In addition, because the first attempt to run PA 3.0.1 writes values to the registry, those values need to be deleted before any future attempts to run PA will be successful.

Step 1: Disable Shared Profiles

- 1) When running Parallels, click on the "Virtual Machines" menu item at the top of the screen. Then choose "Configure". (This is the case in Parallels version 5, and I don't know if that is how you get to the configuration in Parallels version 4.)
- 2) Now you should see the Virtual Machine Configuration dialog box. Select '**Shared Profile**' from the list on the left side of the dialog box.
- 3) **Uncheck** the option to enable shared profiles. In other words, you will be **disabling** shared profiles. Refer to the images below corresponding to your version of Parallels.



Parallels version 4 configuration dialog box

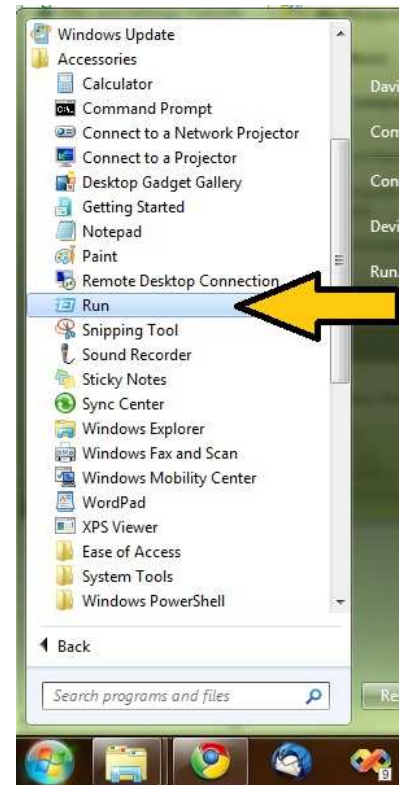


Parallels version 5 configuration dialog box

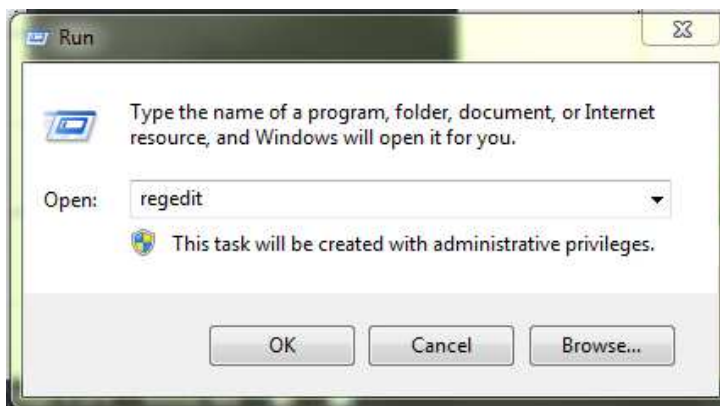
- 4) After disabling shared profiles in Parallels, you will need to log off and log back into your Windows virtual machine.

The following steps will require that you have administrative privileges in your Windows virtual machine.

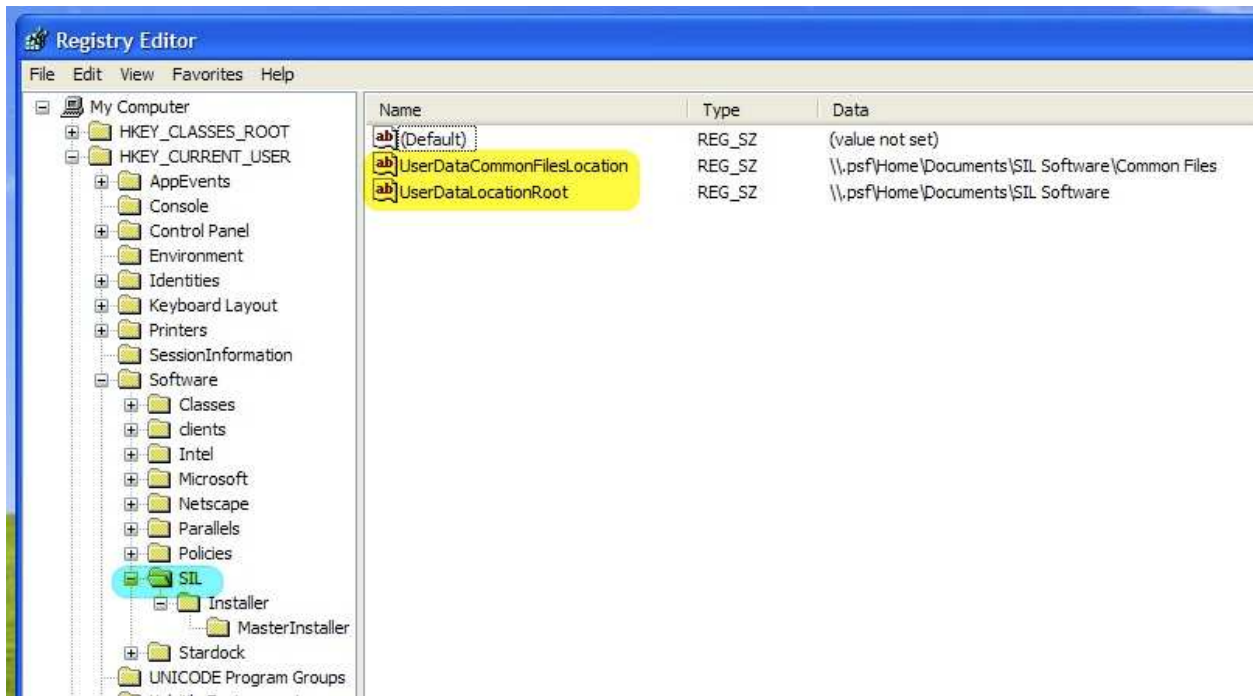
- 5) In Windows, click on the start button and choose "Run". In Windows XP, that should be on the right side of the start menu. In Windows 7, it may or may not be on the right side, and if not, navigate to the Accessories group under which you should find a "Run" command. Refer to the images below corresponding to your version of Windows.



- 6) After choosing "Run" you will see a dialog box like the one below (which is from Windows 7, but the XP version looks very similar).
- 7) In the "Open" box, type "regedit" and click OK.



- 8) Navigate to HKEY_CURRENT_USER/Software/SIL and you will see the two values “UserDataCommonFilesLocation” and “UserDataLocationRoot” in the right pane (See image below).
- 9) Select UserDataCommonFilesLocation and delete it.
- 10) Select UserDataLocationRoot and delete it.
- 11) In the left pane, you may or may not see a subordinate key to SIL called “Phonology Assistant”. If you do, then delete it.



- 12) Close the Registry Editor and you should now be able to run PA successfully.

Note: If you would like to get to your Mac documents folder (and other Mac folders) from your Windows virtual machine after shared profiles is disabled, you should be able to reach them by referring to drive letter z:. For example, in Windows, referring to “z:\Documents” refers to your Mac documents folder.

You may also find information on this web page helpful: <http://kb.parallels.com/en/6912>